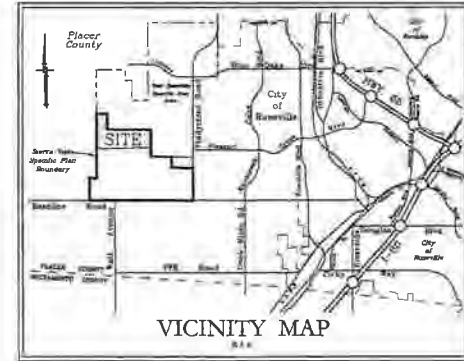


BOUNDARY MAP
**CITY OF ROSEVILLE
 WESTBROOK COMMUNITY
 FACILITIES DISTRICT NO. 1
 (PUBLIC FACILITIES)**

CITY OF ROSEVILLE • PLACER COUNTY • CALIFORNIA
 BEING PORTIONS OF SECTIONS 26 & 27, T.11 N., R.5 E., M D.M.



CITY CLERK'S MAP FILING STATEMENT

FILED IN THE OFFICE OF THE CITY CLERK OF THE CITY OF ROSEVILLE THIS 5 DAY OF March 2014.

Sonia Orozco
 SONIA OROZCO, CITY CLERK
 CITY OF ROSEVILLE
 PLACER COUNTY, CALIFORNIA

CITY CLERK'S MAP STATEMENT

I HEREBY CERTIFY THAT THE WITHIN MAP SHOWING THE PROPOSED BOUNDARIES OF WESTBROOK COMMUNITY FACILITIES DISTRICT NO. 1, CITY OF ROSEVILLE, COUNTY OF PLACER, STATE OF CALIFORNIA, WAS APPROVED BY THE CITY COUNCIL OF THE CITY OF ROSEVILLE, AT A REGULAR MEETING THEREOF, HELD ON THE 5 DAY OF March 2014 BY ITS RESOLUTION NO. 14-75.

Sonia Orozco
 SONIA OROZCO, CITY CLERK
 CITY OF ROSEVILLE
 PLACER COUNTY, CALIFORNIA

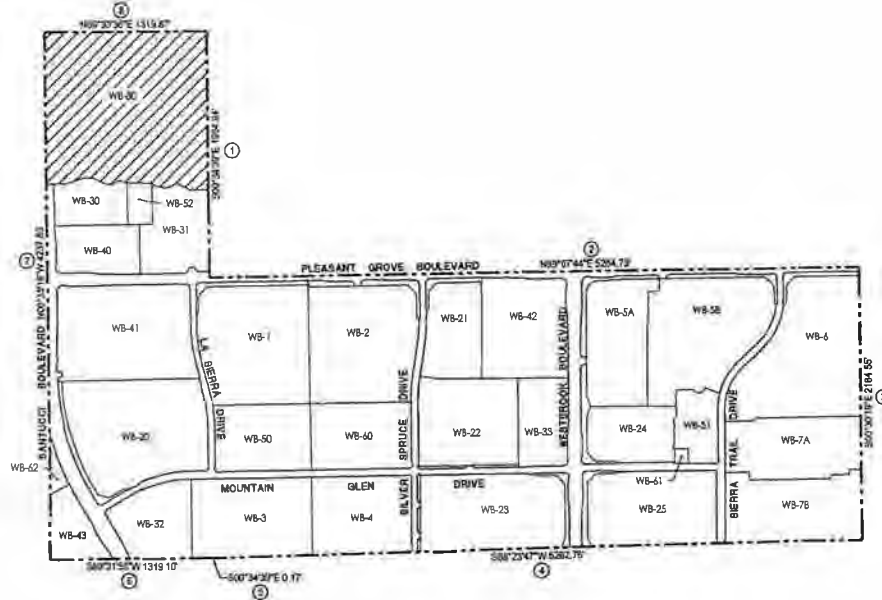
RECORDER'S STATEMENT

FILED THIS 10 DAY OF March 2014, AT THE HOUR OF 10:18 O'CLOCK A M IN BOOK 3 OF MAPS OF ASSESSMENT AND COMMUNITY FACILITIES DISTRICTS, AT PAGE 70, IN THE OFFICE OF THE COUNTY RECORDER IN THE COUNTY OF PLACER, STATE OF CALIFORNIA.

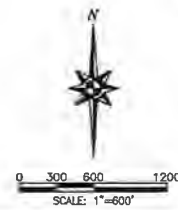
DOCUMENT NO. 2014-0014814

FEE \$9.00

BY: *Jim McCauley*
 JIM MCCAULEY
 COUNTY RECORDER
 COUNTY OF PLACER
By: A. McCombs, Deputy



LEGEND
 - - - - - DISTRICT BOUNDARY
 [Hatched Box] ANTICIPATED TAX-EXEMPT PARCELS



Mackay & Somp
 ENGINEERS PLANNERS SURVEYORS
 1000 Franklin Road, Suite 100, Roseville, CA 95678 (916) 775-1198

MARCH 2014
 SHEET 1 OF 1 18437-EXT